

## Hook blocks with special features

### Gimballed hook suspension for hook blocks with weighing equipment

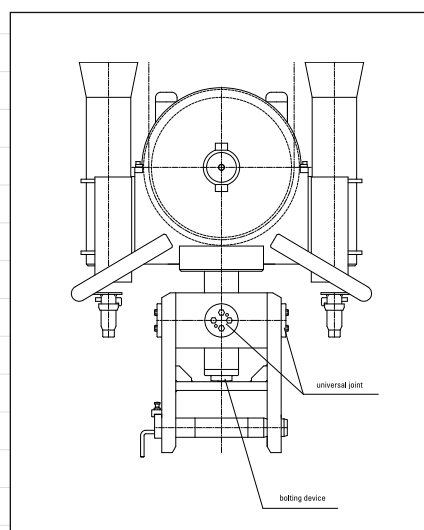


*Hook block on automatic crane with slewing gear, lockable gimballed load suspension and calibratable weighing equipment*

- Positive-fit load suspension avoids oscillating movements
- Safeguard against dynamic overloading of crane and hook block
- Can be integrated into all sizes and types of hook block

If the position of a load centre is off centre, the crane hook block may be being positioned obliquely, resulting in false measurement results for hook blocks with weighing equipment. This can be avoided by means of a gimballed suspension of the load. The universal joint is released for weighing. It is then locked with a bolt through the central shaft and the hook block is positioned in the upper stroke position with appropriately shaped catch pipes on two spikes on the trolley frame. The load cannot swing during the subsequent procedure which considerably accelerates the precise dropping procedure.

The locking bolt has a rated break point which is measured in such a way that it transmits forces from normal acceleration, but breaks for example if the crane moves against the end stop of the track.



MCD Maschinentechnik  
Uwe Richter  
Hansestraße 6  
37574 Einbeck - Germany

Tel. +49.(0)5561. 924 017  
Fax +49.(0)5561. 924 018  
info@mcd-tec.de  
www.mcd-tec.de